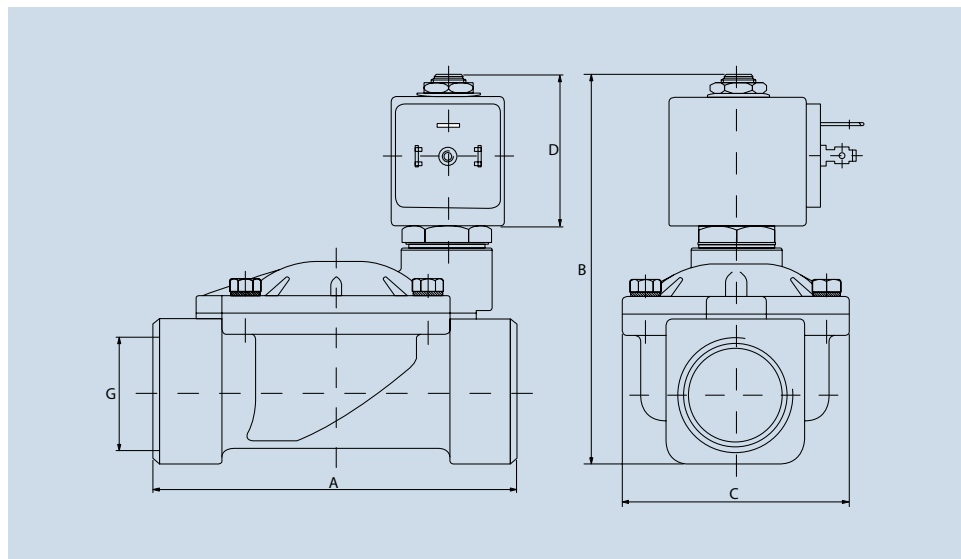




## SOLENOID VALVE WITH COIL, FILTER AND FLOW LIMITER

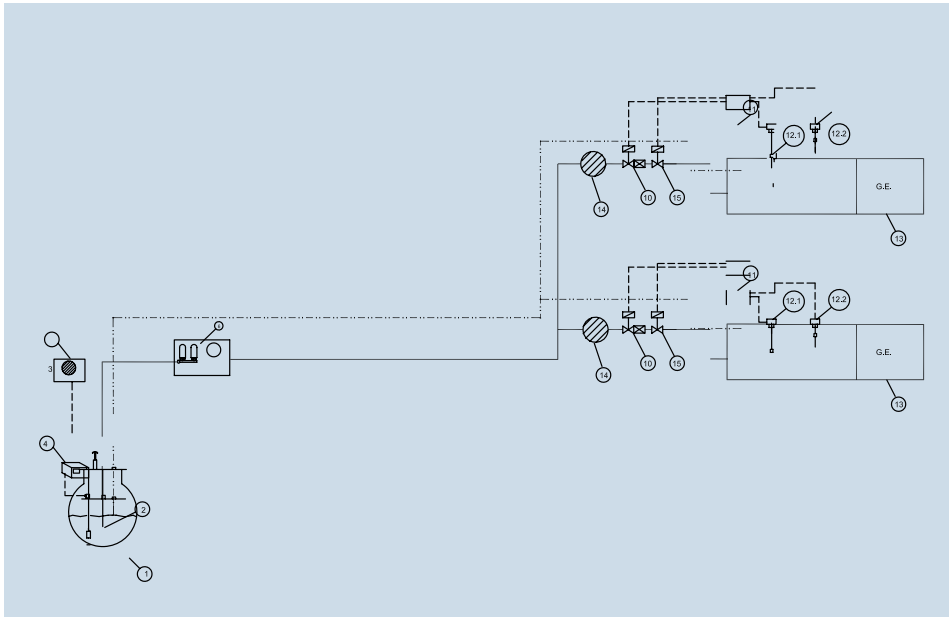
Day tank inlet set for diesel oil to be used with pressure accumulator transfer pumps type Inpro GP

MODEL	NOMINAL DIAMETER	Kv	Q max	PERMISSIBLE DIFFERENTIAL PRESSURES			DIMENSIONS (mm)			
	mm	m <sup>3</sup> /h	m <sup>3</sup> /h	min	max		A	B	C	D
					CC	CA				
3/8"	13	3,00	3,00	0,1	20	20	69	99,5	40	44
1/2"	13	3,00	3,00	0,1	20	20	72	101,5	40	44
3/4"	20	8,40	8,40	0,1	20	20	100	107	65	44
1"	25	9,60	9,60	0,1	20	20	104	112,5	65	44
1 1/4"	35	25,20	25,20	0,1	10	10	145	134	102	44
1 1/2"	40	30,00	30,00	0,1	10	10	145	134	102	44
2"	50	37,20	37,20	0,1	10	10	145	148	118	44
3"	75	83,00	83,00	0,2	10	10	250	195	184	44



### Accessories and custom-made products

- Function: Solenoid valve 2/2 - normally closed - (type 7321BB).
- Mounting position: Uniform. Preferably, install the coil facing upwards.
- Material specifications: Housing made of embossed brass. Internal parts made of stainless steel. Gaskets made of synthetic materials NBR.
- Liquids: diesel and water.
- Maximum allowable temperature of the liquid: 90°C
- Ambient temperature: min. -10°C / max. 90°C
- Electrical Part: Protection Standard, IP 65



- 1) Main storage tank
- 2) Suction
- 3) EDM40 level gauge flexible probe
- 4) EDM40 control display with 2 relay output
- 5) Overfill warning kit with alarm and reset
- 6) Liquid barrier
- 7) DDP25 leak detection system for double wall tanks
- 8) INPRO GP Pumpset for oil
- 9) NC solenoid valve for oil with flow limiter
- 10) SMMR-2 level control
- 11.1) Level probe Open/Close/Safety stop
- 11.2) Level probe NO solenoid v. (Very high level)
- 12) Filter
- 13) NO Solenoid valve for oil
- 14.1) Flow switch control at vent (probe)
- 14.2) Flow switch control at vent (control)
- 15) Power Generator
- 16) Leak detection system, wall mounting system

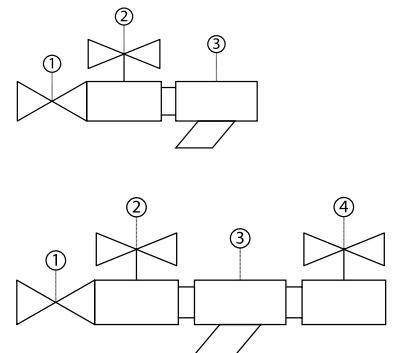
## Scope of delivery

- Flow limiter factory set and sealed to the required flow and consists of a solenoid valve with chrome-plated brass body and nylon closures.
- Solenoid valve (normally closed), with a 230 V coil, maximum pressure 20 bar, with brass body and nitrile diaphragm suitable for diesel oil.
- Strainer made of chrome-plated brass with 0.1 mm mesh size in stainless steel PN 16 or higher, suitable for diesel oil.

The solenoid valve is controlled by a float switch SMMR1. SMMR1: probe + control box with 1 relay.

**Optional:** Safety system with solenoid valve, normally open

A solenoid valve (de-energized) is mounted in series in the aforementioned system to increase safety. This solenoid valve will receive a signal from a second independent float switch and stop the oil supply.



## Scope of delivery

Points 1, 2 and 3 (as above scope of delivery) and additionally 4.

- Solenoid valve with a 230 V coil, maximum pressure 20 bar, with brass body and nitrile diaphragm suitable for diesel oil.

The solenoid valve -normally closed- is controlled by a float switch SMMR2.

SMMR 2: Probe + control box with 2 relays.

See Application Schema: 11 and 12.1

The solenoid valve -de-energized o en- is controlled by an additional probe for SMMR1.

Probe for SMMR1

See Application Schema: 12.2



research + development

C/Invierno, 4-6 28500  
 Arganda del Rey, Madrid (Spain)  
 Telf.: (+34) 918 719 294  
 info@inprord.com  
 www.inprord.com



Investigación y Producción S.L. Zweigniederlassung Deutschland

63457 Hanau - Voltastr, 10  
 Deutschland (Germany)  
 Telf.: (+49) 06181/9587-0  
 info@simka.de  
 www.simka.de