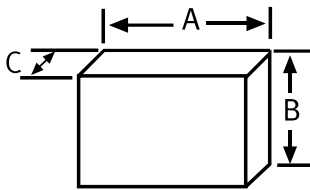




## OIL TRANSFER PRESSURE UNITS GP GE - 2 PUMPS / TWIN SYSTEM

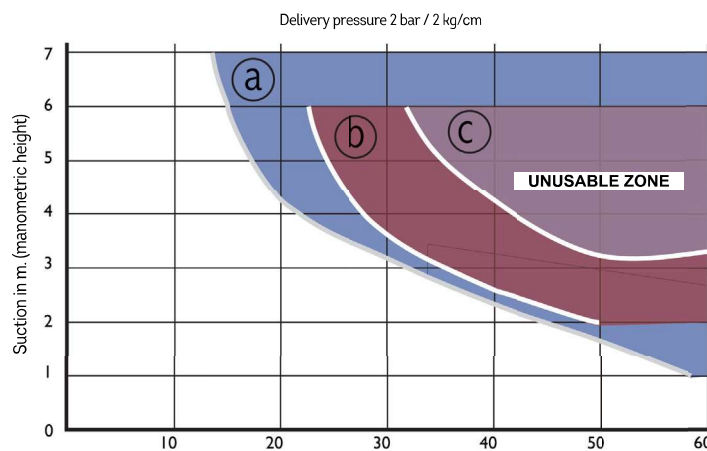
MODEL		GP-70 GE	GP-130 GE	GP-200 GE	GP-300 GE	GP-500 GE	GP-800 GE	GP-1500 GE
FLOW	l/h	70	130	200	300	500	800	1500
CONNECTION TO THE HYDRAULIC CIRCUIT (Ø THREAD / Ø MM)	SUCTION	1/2" F	1/2" F	1/2" F	3/4" F	1" F	1" F	1" F
	DRIVE	3/8" F	3/8" F	3/8" F	1/2" F	1/2" F	1/2" F	3/4" F
POWER SUPPLY	VOLTS	230/400 D	230/400 D	230/400 D	230/400 D	230/400 D	230/400 D	230/400 D
MOTOR POWER	C.V.	1/4	1/3	1/3	1/3	1/2	3/4	1 1/2"
	KW	0,18	0,25	0,25	0,25	0,37	0,55	1,1
MAX. PRESSURE	Kg/cm <sup>2</sup>	3,5	3,5	3,5	6	6	6	6
SAFETY VALVE OPENS AT:	Kg/cm <sup>2</sup>	4	4	4	6,5	6,5	6,5	6,5
MOTOR PROTECTION	IP	55	55	55	55	55	55	55

- (\*) There is a 230 single-phase version (W)  
- Sound level: 58 db (A)



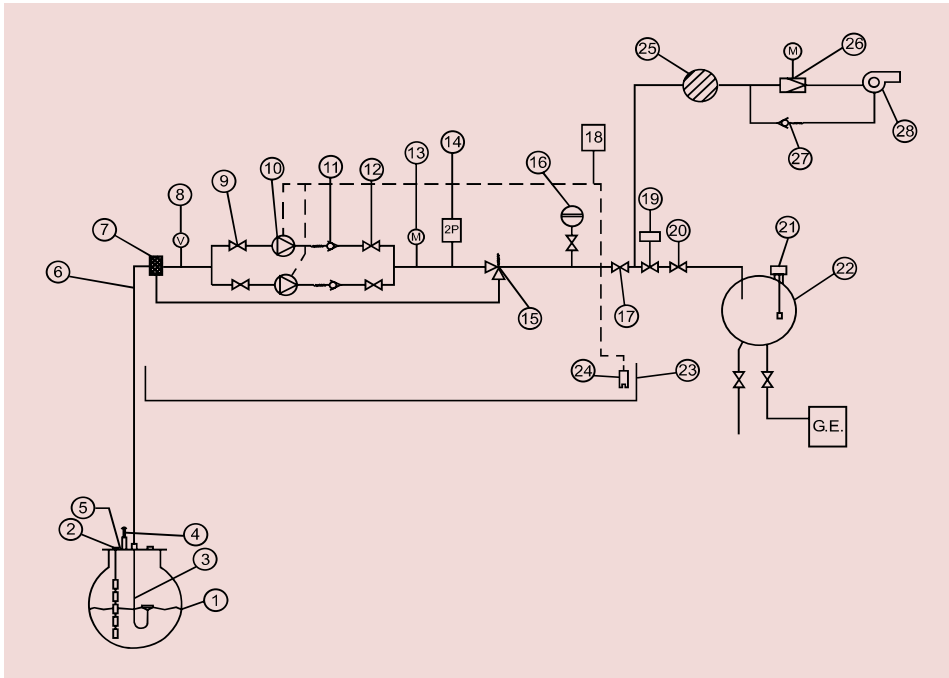
TYP	GP-70 GE	GP-130 GE	GP-200 GE	GPS-300 GE	GP-500 GE	GP-800 GE	GP-1500 GE
A	700	700	700	800	800	890	1455
B	530	530	630	720	720	750	970
C	300	300	330	370	370	400	550
Approx. Weight (kg)	31,4	34,4	35,8	43,4	53	89	89

### SUCTION DIAGRAM



#### UNUSABLE ZONE

- (a) Pressure Unit GP-30
- (b) Pressure Unit GP-70, GP-130 y GP-200
- (c) Pressure Unit GP-300, GP-500, GP-800 y GP-1500



- 1) Main storage tank
- 2) EDM-40 Remote level gauge probe
- 3) Floating suction
- 4) EDM-40 Remote level gauge screen
- 5) Overfill prevention kit
- 6) Intake pipe
- 7) Filter
- 8) Vacuum gauge
- 9) Quick shutoff valve
- 10) Electric gear pump
- 11) Anti-return valve
- 12) Quick shutoff valve (Only for GP-1500)
- 13) Pressure gauge
- 14) Dual purpose pressure switch
- 15) Conducted escape safety valve
- 16) Membrane expansion vessel
- 17) Quick shutoff valve
- 18) Motor protection GP
- 19) Solenoid valve
- 20) Flow limiter
- 21) SMMR I Level switch
- 22) Daily tank
- 23) Drip tray (included for GP-800 and above models)
- 24) Leak detection (included for GP-800 and above models)
- 25) Filter
- 26) Pressure reduction valve (using pressure gauge)
- 27) Non-return valve
- 28) Burner
- 29) Burner inlet assembly

## GP GE oil transfer pressure unit, two pumps, for diesel oil and HVO

Scope of delivery: 2 motors, 2 gear pumps, coupling, manifold, filter, vacuum gauge, pressure gauge, check valve, shut-off valve for supply and discharge line, double function adjustable pressure switch, pressure accumulator with diesel oil-resistant membrane expansion vessel, safety valve opening at 4 or 6 bar -depending on model-. All parts mounted on a mounting plate, wired ready for connection, with oil collecting tray and leak detection sensor with 0.75 m probe cable. Voltage-free relay outputs for central building management control system, with 6 signals (BMS) (Inbuilt as standard in GP-800 and GP-1500).

Motor protection class IP-55.

The unit is built and tested according to DIN EN 12514-1

## Accessories and adaptations

- Free voltage relay output to control from centralised Building Management System, in kit 6 signals (2-thermal, motors 1 or 2 ON, low pressure and Leak safety ON). Standard in GP 800 and GP 1500.
- GSM alarm system by SMS messages, or connection to modem.
- Adaptation of Pressure Group for high pressure, working conditions of up to 6 Kg/cm
- Leak collector trays with infrared detectors (standard in GP-800 and GP-1500).
- Modifications to adapt to specifically regulated environments with tropicalised equipment or ATEX.
- Solenoid valves with flow limiters, to automate filling in supply tanks for electrical generators.
- Soundproof sheet cabinets with UNE-25 poly-pyramid foam and lock. Manufactured with no back and made-to-measure for made-to-measure each Pressure Group model.
- Assembly of Pressure Groups in IP-55 cabinets for outdoor installation with exterior suction and drive pipe couplings, electric connection presses and ventilation grills.
- Line pressure switch to signal low pressure.
- Power supply failure safety system (timer deferred low pressure stop.)
- Burner inlet assembly.
- Modulating burner inlet assembly.



This is a product suitable for projects.  
See all Inpro project references here



C/Invierno, 4-6 28500  
 Arganda del Rey, Madrid (Spain)  
 Telf.: (+34) 918 719 294  
 info@inprord.com  
 www.inprord.com



63457 Hanau - Voltastr, 10  
 Deutschland (Germany)  
 Telf.: (+49) 06181/9587-0  
 info@simka.de  
 www.simka.de