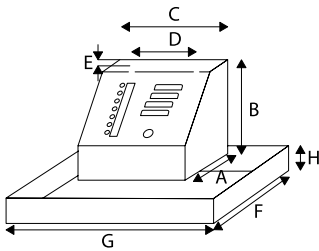




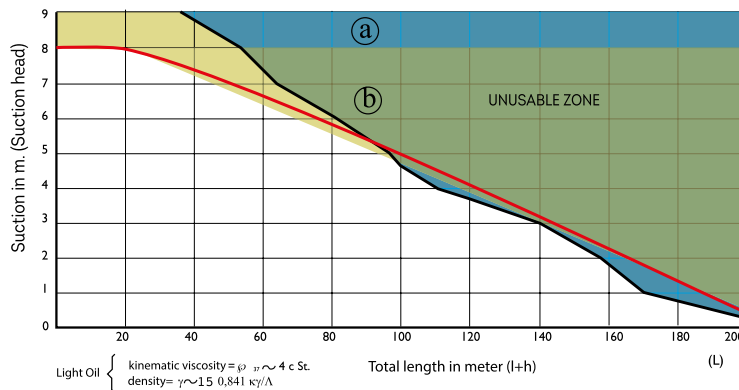
OIL SUCTION TRANSFER UNITS GPS GE - 2 PUMPS / TWIN SYSTEM

TYP		GPS-35 GE	GPS-70 GE	GPS-130 GE	GPS-200 GE	GPS-350 GE	GPS-950 GE	GPS-1500 GE
FLOW	l/h	30	70	130	200	350	950	1500
POWER SUPPLY	VOLTS	230 Single-phase	230/400 Tri-phase(*)	230/400 Tri-phase(*)	230/400 Tri-phase(*)	230/400 Tri-phase(*)	230/400 Tri-phase	230/400 Tri-phase
RECOMMENDED SUCTION PIPE	mm Ø (OD)	12	15	15	18	22	25	32
MOTOR POWER	C.V.	1/6	1/4	1/3	1/3	1/3	3/4	1½
	KW	0,12	0,18	0,25	0,25	0,25	0,55	1,1
SUCTION	(mm) Ø PIPINGD	G 3/8" F	G ½" W	G ½" F	G ¾" F	1" F	1" F	1" F
RETURN PIPE BURNER	BSP THREAD	G 3/8" F	G ½" F	G ½" F	G ½" F	1" F	1" F	1" F
TANK CAPACITY	lts.	24	68	68	68	238	238	245
SOUND LEVEL	dB (A)	46	48	49	49	49	49	49
MOTOR PROTECTION	IP	20	55	55	55	55	55	55

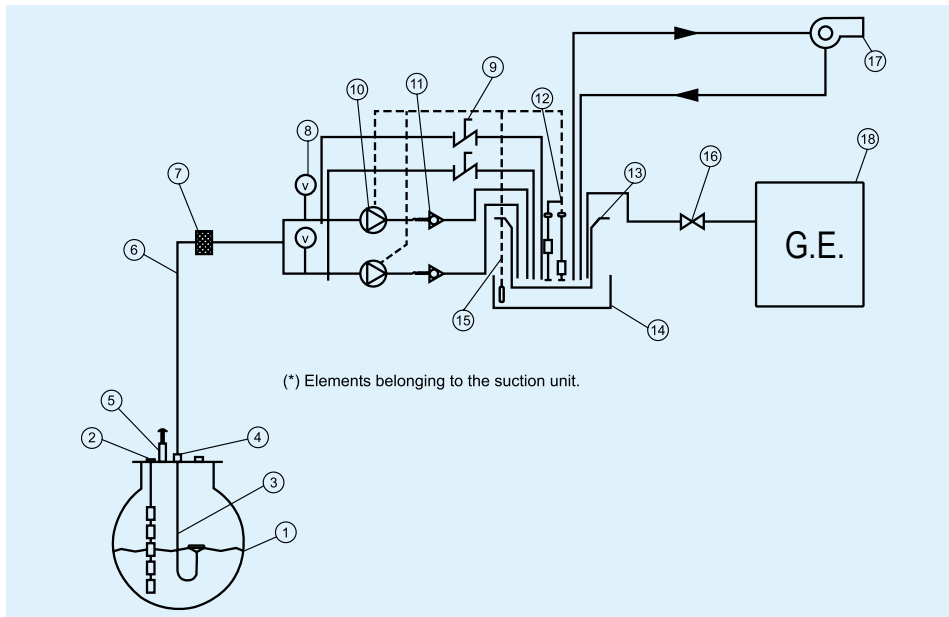
- (!) There is a 230 single-phase version (W). Other voltages under request
- For flow see suction diagrams.



TYP	GPS-35 GE	GPS-70 GE	GPS-130 GE	GPS-200 GE	GPS-350 GE	GPS-950 GE	GPS-1500 GE
A	263	370	370	370	600	600	600
B	370	640	640	640	1030	1030	1030
C	680	760	760	760	960	960	960
D	540	-	-	-	-	-	-
E	20	-	-	-	-	-	-
F	400	430	430	430	1090	1090	1090
G	800	870	870	870	1100	1100	1100
H	80	185	185	185	200	200	200
Approx. Weight (kg)	18	48	50	50	97	97	97



Suction curves and total length
 (a) GPS-35N / GPS-35 GE / GPS-70 N / GPS-70 GE / GPS-35 DRUCK
 (b) GPS-130N-GE / GPS-200 N-GE / GPS-350 N-GE / GPS-950 N-GE



- 1) Main storage tank
- 2) Remote level gauge
- 3) Floating suction
- 4) Manhole
- 5) Ventilation tee
- 6) Intake pipe
- 7) (*) Filter
- 8) (*) Vacuum gauge
- 9) (*) by-pass valve
- 10) (*) electric gear pump
- 11) (*) anti-return valve
- 12) (*) Safety / service switches (level)
- 13) (*) Tank
- 14) (*) Drip tray
- 15) (*) Leak detection
- 16) Quick shut-off valve
- 17) Burner / boiler
- 18) Generator unit

GPS GE suction feed pump units for EL heating oil, twin units, including oil drain tray and leakage oil detector

Scope of delivery: tank, 2 motors, 2 gear pumps, coupling, manifold, filter, vacuum gauge, non-return valve, level switch operation/shear, thermostat 40°C (preset), motor protection switch. Assembled ready for connection. Standard version with two suction line connections and a return supply connection. With voltage-free signal output. Additional suction line connections at an additional cost. Installed in oil drip tray with leakage oil detector with infrared probe and 0.75 m. cable. For floor installation; GPS-35 also suitable for wall mounting.

Motor protection class IP-55.

Basically, the flow rate depends on suction length, suction resistance, suction height, pipe cross-section and temperature (see diagram). The devices are not suitable for outdoor installation.

The unit is built and tested according to DIN EN 12514-1

Technical Characteristics

- Voltage free general alarm outlet.
- Output to attach anti-siphon solenoid valve.
- Oil leak collector tray with infrared detector.
- Safety thermostat (40°C) for temperature gasification.
- Suction pipe couplings for two burners and one for returns.

Accessories and adaptations

- 8 free relay outputs outlets to control incidents from centralised post / BMS (2-Thermal, 2-Motors ON, Low Level, High Level, Temperature above 40°C, and Leak detection ON).
- GSM alarm system by means of SMS messages, or connection to modem.
- Adaptation of Suction Groups with greater tank capacity for installations designed for Power Generators, replacing the daily tank.
- Modifications for extreme environments or subject to regulations (Tropicalisation, ATEX, etc.)
- Solenoid valves for siphon installations.
- Additional suction intakes for more burners.



C/Invierno, 4-6 28500
 Arganda del Rey. Madrid (Spain)
 Telf.: (+34) 918 719 294
 info@inprord.com
 www.inprord.com



63457 Hanau - Voltastr, 10
 Deutschland (Germany)
 Telf.: (+49) 06181/9587-0
 info@simka.de
 www.simka.de