



GP MICRO DOMESTIC OIL LIFT PUMP FOR BURNER

Domestic Transfer Equipment

Technical specifications

Max. Flow rate	17 Lts/h
Max. Suction height	3 M.
Max. Drive pressure	15 M. (1,5 Kg/cm ²)
Power supply	230 V 50 hz
Power consumption	18 W
Inlet and outlet connection	8 Mm.

- Domestic oil lift pump, designed to supply diesel or kerosene to small heating appliances when a higher than normal lift is required -for example oil tank situated up to 15 metres lower than the burner-, and do not require more than 17 l/h oil.
- The MICRODOMESTIC is electrically connected to the burner, and comes into operation only when the appliance requires oil.

Capacity

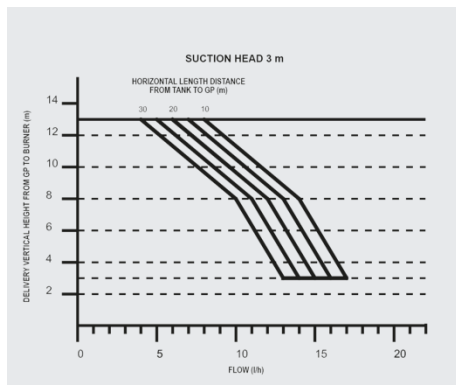
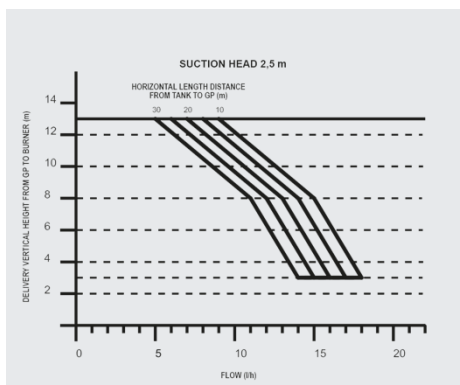
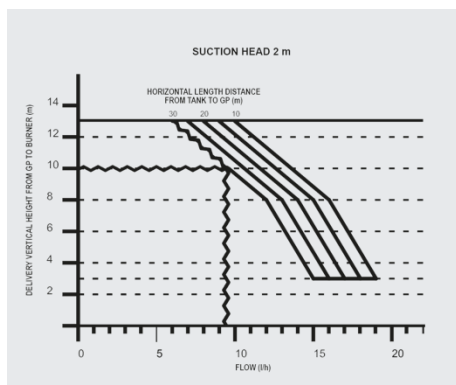
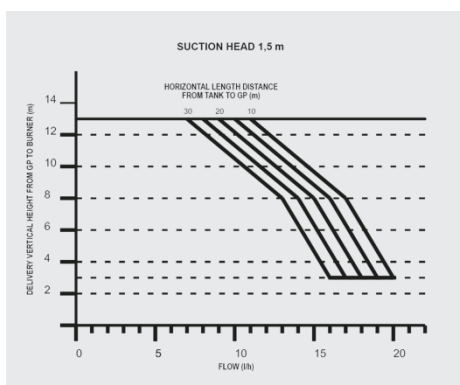
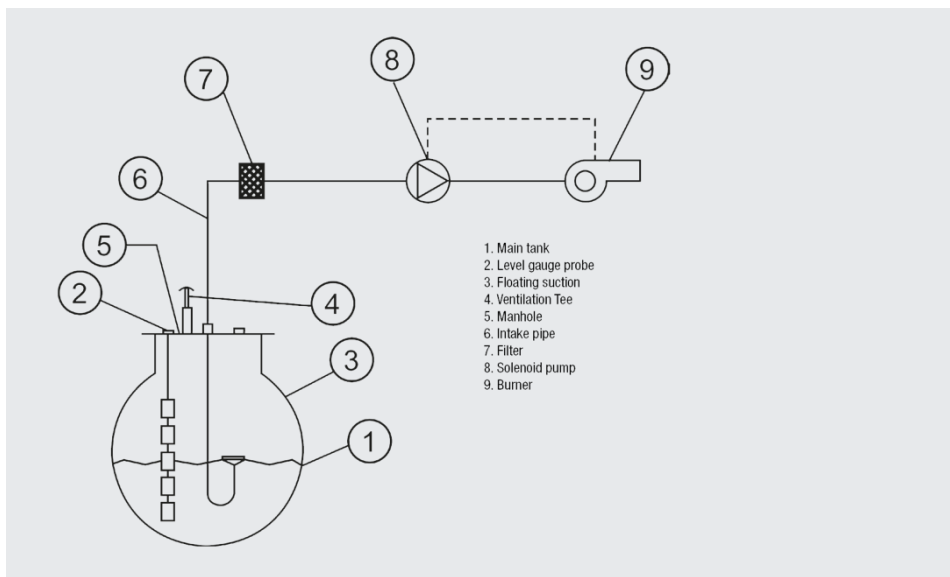
- The MICRODOMESTIC oil lift pump is designed to assist in the burner automatic supply of diesel.
- This little pump, can suck oil up to 3 meters in vertical or 25 mt. horizontal and drive up the oil up to 15 meters in vertical (1.5 kg/cm²).

Warranty

- To ensure proper operation, each unit must pass 24 hours running at the test bench, prior to dispatching.
- Supplied with glued flexible tubes and fittings for 10 mm. O.D tube for the easier hydraulic connection. Screws and plastic lugs are also provided for easier fixing to the wall.
- The stainless steel cover protects it from shocks and provide a design adapted to a domestic environment.
- INPRO MICRODOMESTIC is a quality product, with full operation warranty, easy to install and extremely silent.

GP MICRO DOMESTIC OIL LIFT PUMP FOR BURNER

Domestic Transfer Equipment




C/Invierno, 4-6
28500 Arganda del Rey - Madrid - Spain
Telf.: (+34) 918 719 294
info@inpro.com - www.inpro.com



simka
Inpro Research and Development SL, Zweigniederlassung Deutschland

63457 Hanau - Voltastr., 10
Deutschland / Germany
Telf.: (+49) 06181/9587-0
info@simka.de - www.simka.de