

MICRO DOMESTIC



Installation Guide



CE

V01 / 01-25

INDEX

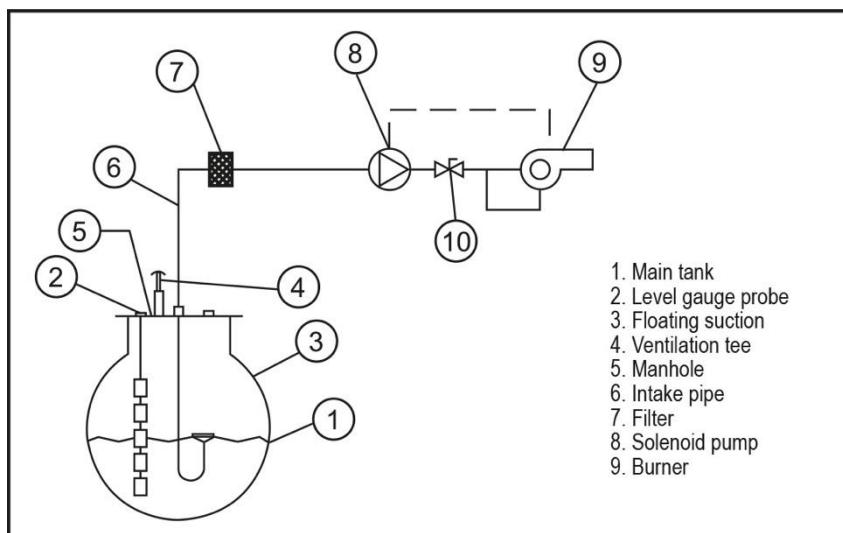
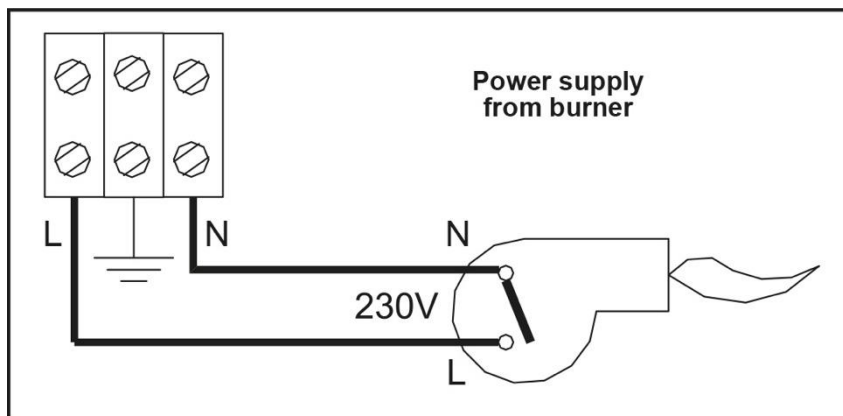
1. Assembly, mounting and commissioning instructions	4
2. Mantenimiento	6
2.1. Advantages of Inpro Micro Domestic.....	6
2.2. Technical characteristics.....	6

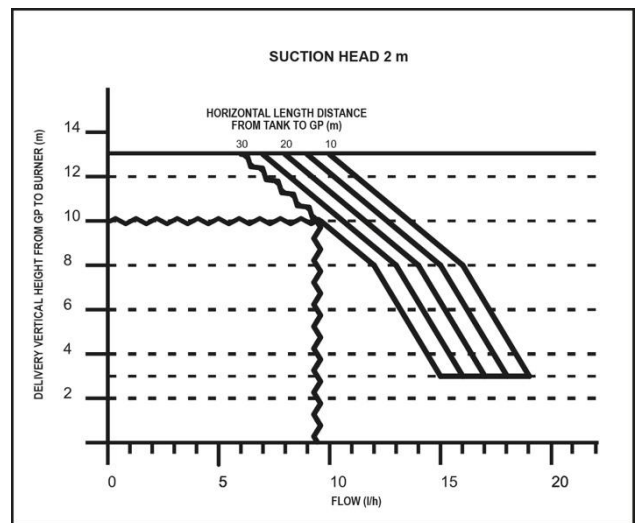
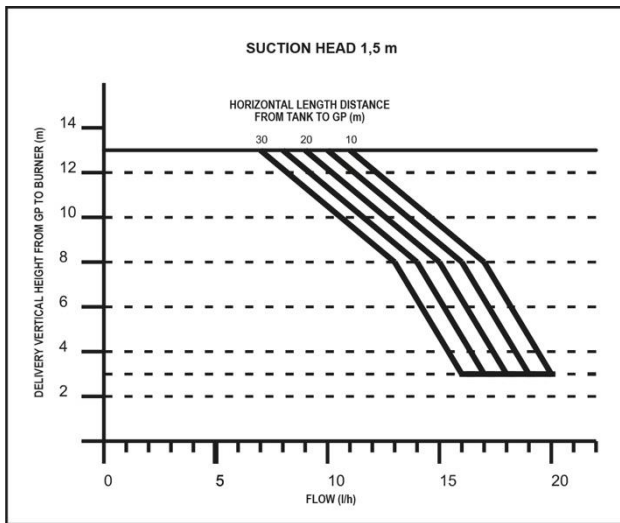
1. Assembly, mounting and commissioning instructions

1. Fix the INPRO MICRO DOMESTIC to the wall:
 - Put the plastic lugs in place.
 - Tighten the screws (not too tight).
2. Connect the flexible intake pipe and driving flexible pipe racords to the copper pipe (8 x 10).
3. Electrical connection procedure, receiving the mains electrical supply from burner.

Connect the mains supply of INPRO MICRO DOMESTIC to a burner 230 V output which works only when the burner pump is "ON".
4. During first oil supply to burner, it is necessary to take out the existing air in the pipe, before connecting to burner flexible.

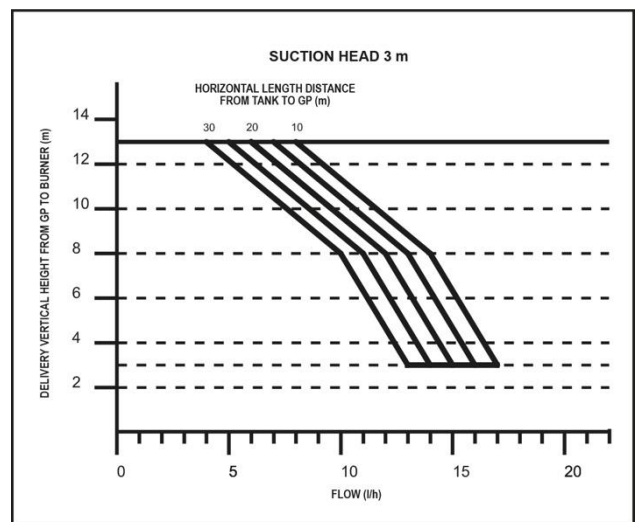
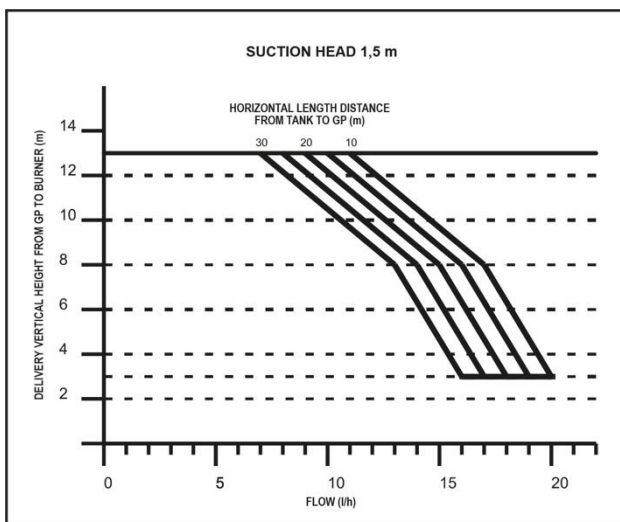
ELECTRICAL DIAGRAM





Example:

- Suction head between the tank bottom and the desired position for the INPRO MICRO DOMESTIC of 2 m (so please read second diagram above).
- Pipe length (horizontal) of 30 m between the tank and the INPRO MICRO DOMESTIC.
- After the INPRO MICRO DOMESTIC till the burner there is a difference in height of 10 m.
- The results in a maximum power of 9 l/h.



NEVER INSTALL THE INPRO MICRO DOMESTIC IN CONTINUOUS WORKING WITHOUT BURNER CONSUMPTION

2. Maintenance

The only recommended maintenance is to clean the INPRO MICRO DOMESTIC filter every time the installation is serviced.

Once the filter is clean, put back into position, making sure that the seal is properly set in position so that it is completely airtight.

ADVANTAGES OF INPRO MICRO DOMESTIC

- It increases the useful working life of the burner pump.
- Energy saving: It only comes into operation when the burner demands this.
- There is no electrical noise.
- The cover is made of stainless steel.
- Flexible pipes for easy installation, and noiseless working.
- 100% of INPRO MICRO DOMESTIC pass a 48 h. test in our works.

TECHNICAL CHARACTERISTICS

Max. Flow Rate:	17 l/h
Max. Suction Height:	3 m
Max. Drive Pressure:	15 m. (1,5 kg/cm ²)
Power Supply:	230 V 50 Hz
Power Consumption:	18W
Inlet and Outlet Connection:	8 mm I.D.

MICRO DOMESTIC



C/Invierno, 4-6
Pol. Ind. "El Malvar"
28500 Arganda del Rey
Madrid
Tel.: (+34) 91 871 92 94
Fax: (+34) 91 871 92 56
info@inprord.com

www.inprord.com

**We recommend keeping these
Instructions next to the Pressure Unit**

